



KALPATARU
SUMMIT

📍 MULUND (W)

PLAN BOOKLET

WE'VE BEEN PLANNING YOUR SUCCESS.

Kalpataru Summit is the most prestigious commercial high-rise tower designed with iconic aesthetics of international standards with facilities that all businesses require. With striking 33 storeys, located at the epicenter of the central suburbs of Mumbai, the tower will underline the presence of the new age business barons.

KEY HIGHLIGHTS

- Located on LBS road
- Ample car park space
- Air-conditioned double-height grand entrance lobby
- Floor-to-floor height of ~11 ft
- Apex offices & Pinnacle corner offices
- High street retail



MULUND (W), THE NO.1 COMMERCIAL HUB OF MUMBAI

Seamlessly connected to the **major commercial hubs** like Wagle estate in BKC, Powai, Vikhroli, Thane & upcoming airports

Close proximity to Eastern Express Highway (EEH) connecting to central suburbs and freeway

Close to two railway stations - Mulund and Nahur providing seamless commuting option



COMPLEX LAYOUT PLAN



Conditions apply*

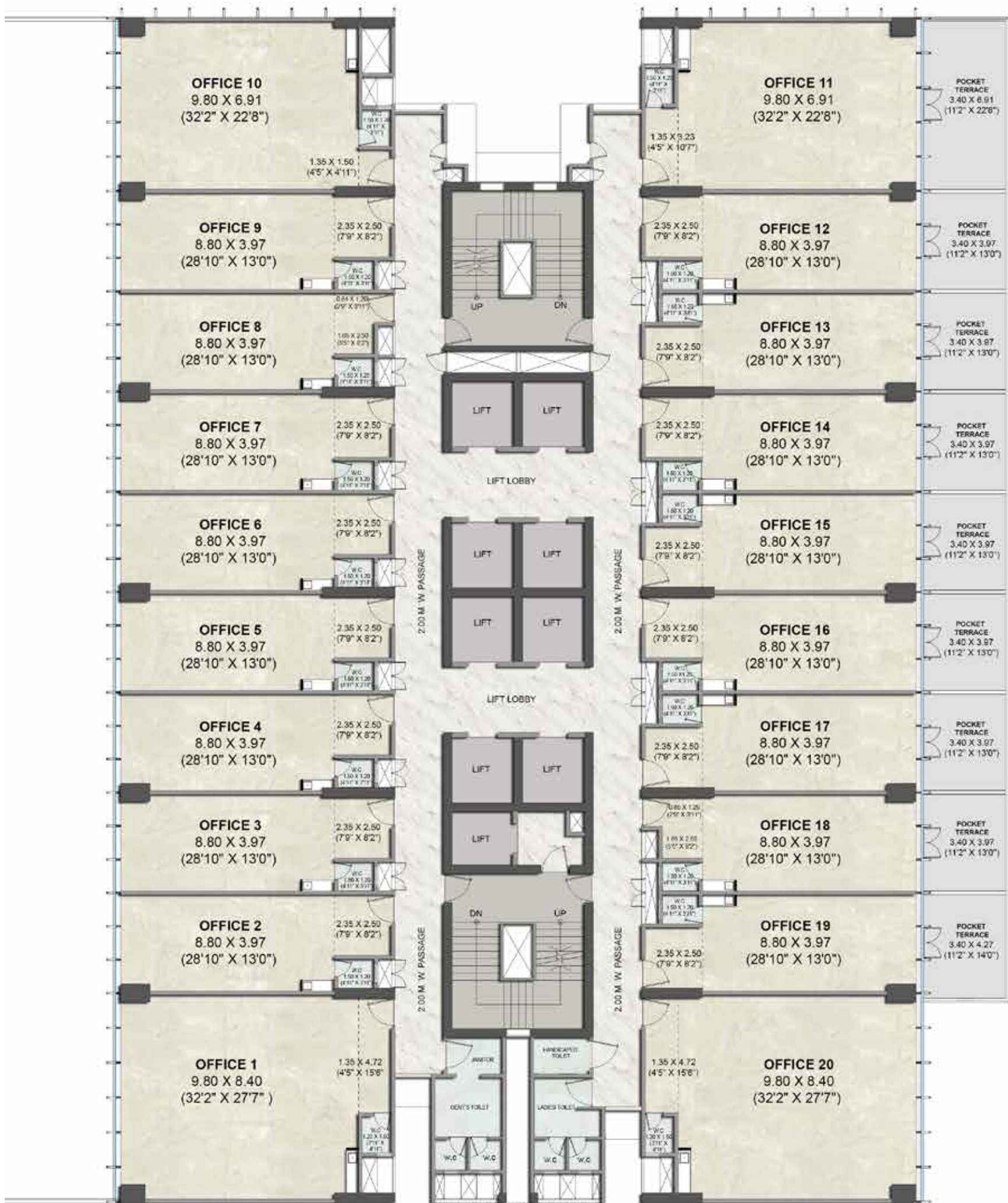
FLOOR PLANS

10TH PODIUM FLOOR PLAN (REFUGE)



Conditions apply*

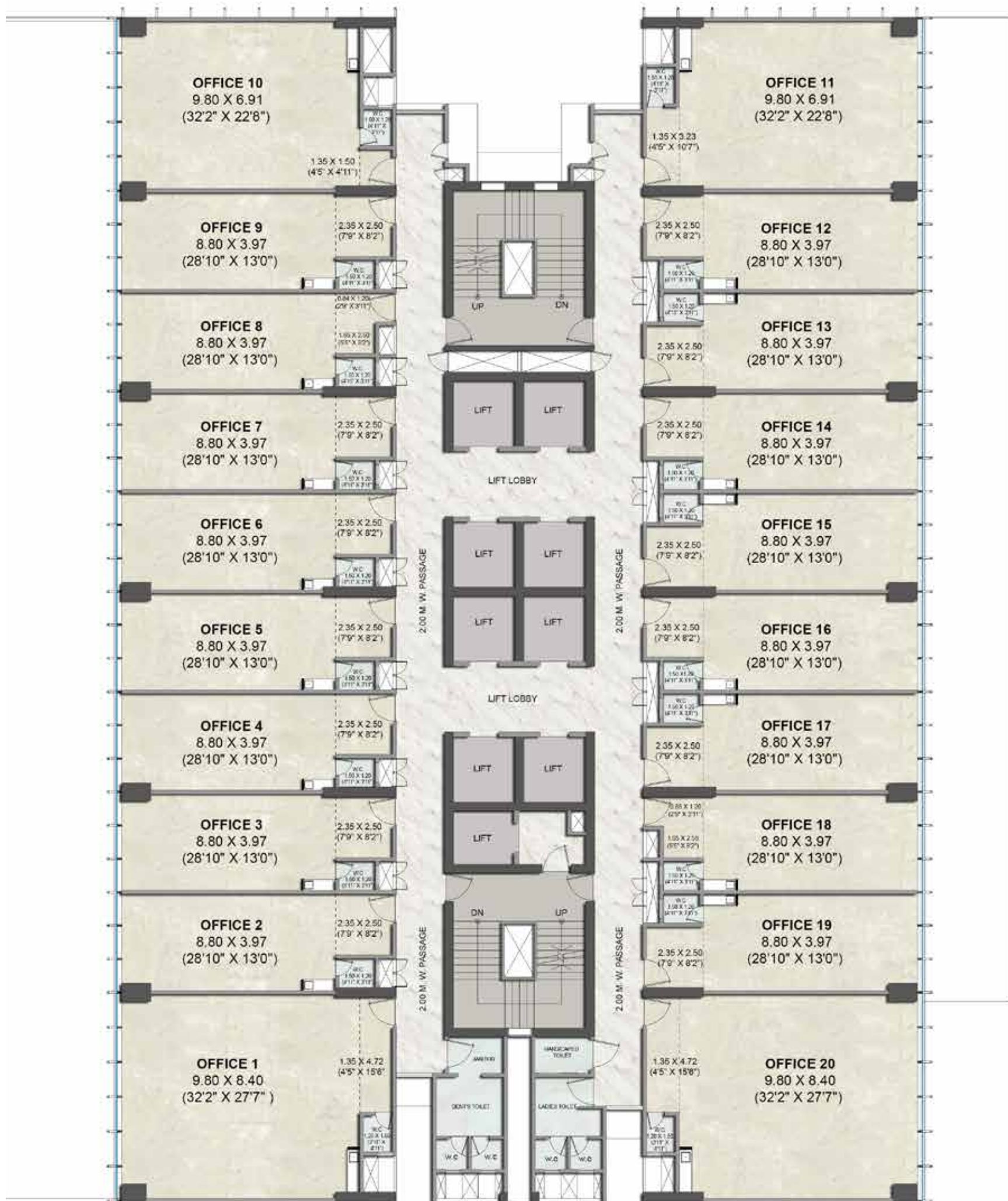
1ST FLOOR PLAN



Conditions apply*

Kalpataru Summit bearing the MahaRERA Regn. No. 00000000000 for details, please visit: <https://maharera.mahaonline.gov.in/>

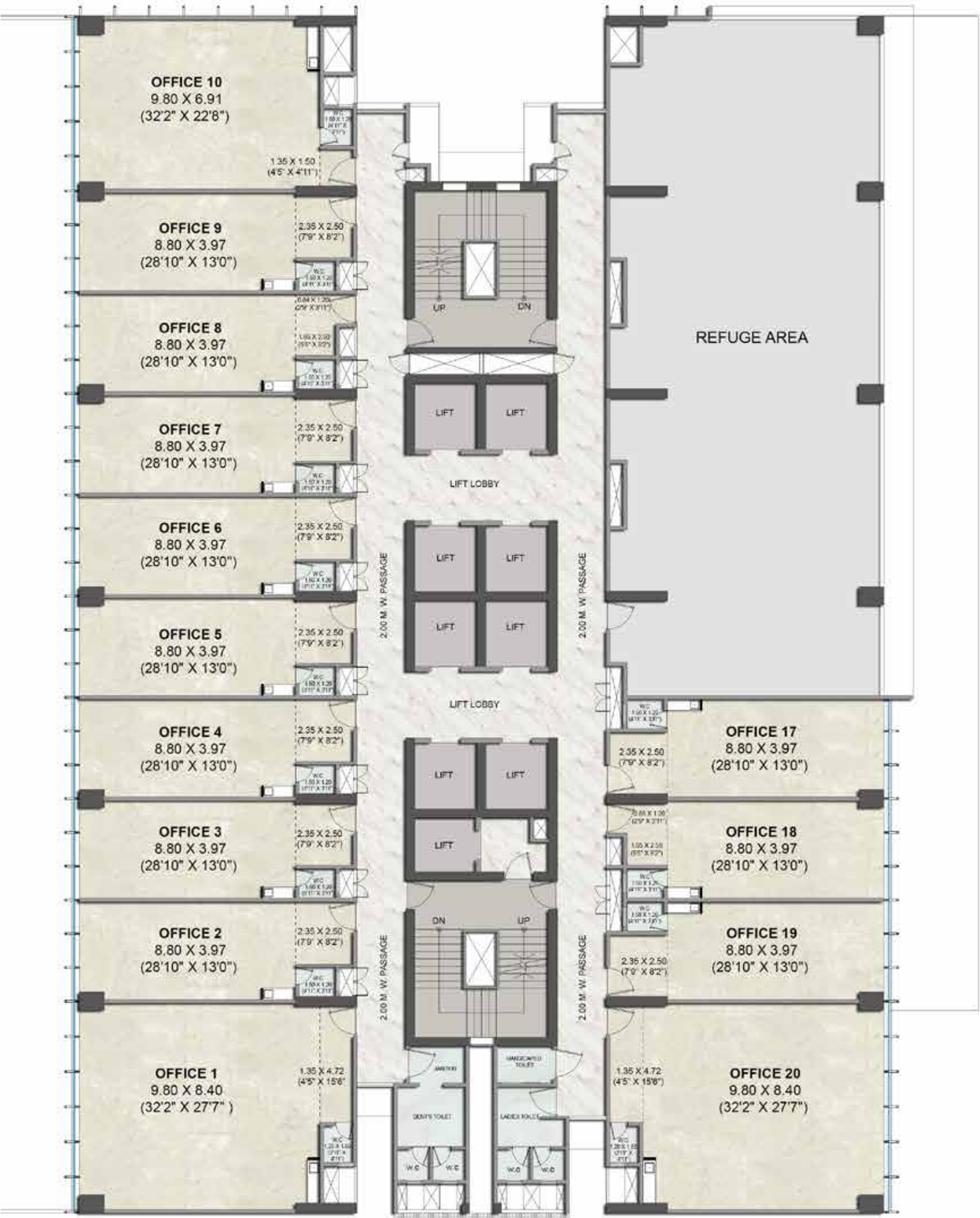
2ND - 6TH, 8TH - 13TH, 15TH - 20TH, 22ND - 23RD FLOOR PLAN



Conditions apply*

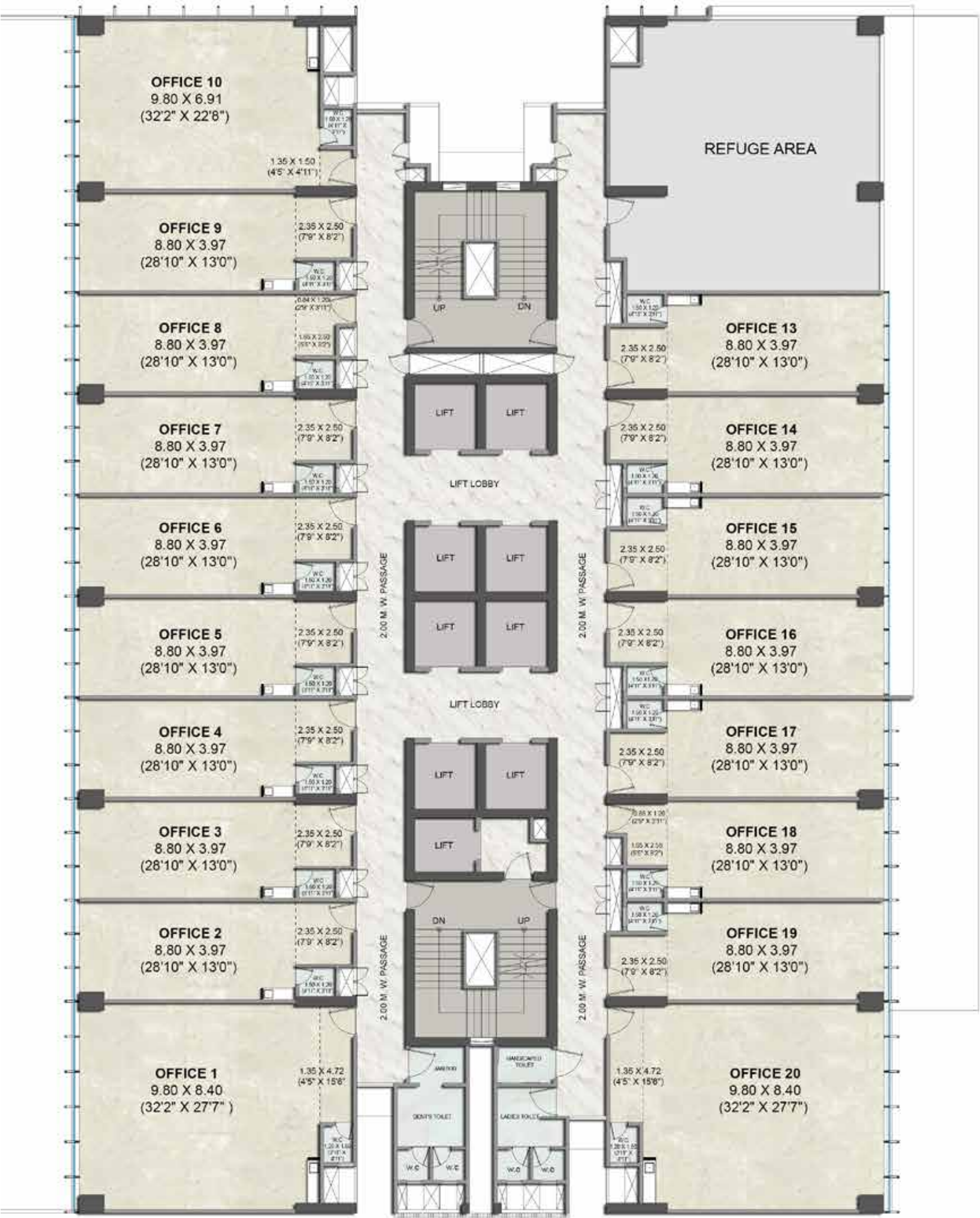
Kalpataru Summit bearing the MahaRERA Regn. No. 00000000000 for details, please visit: <https://maharera.mahaonline.gov.in/>

7TH & 14TH FLOOR PLAN (REFUGE)



Conditions apply*

21ST FLOOR PLAN (REFUGE)



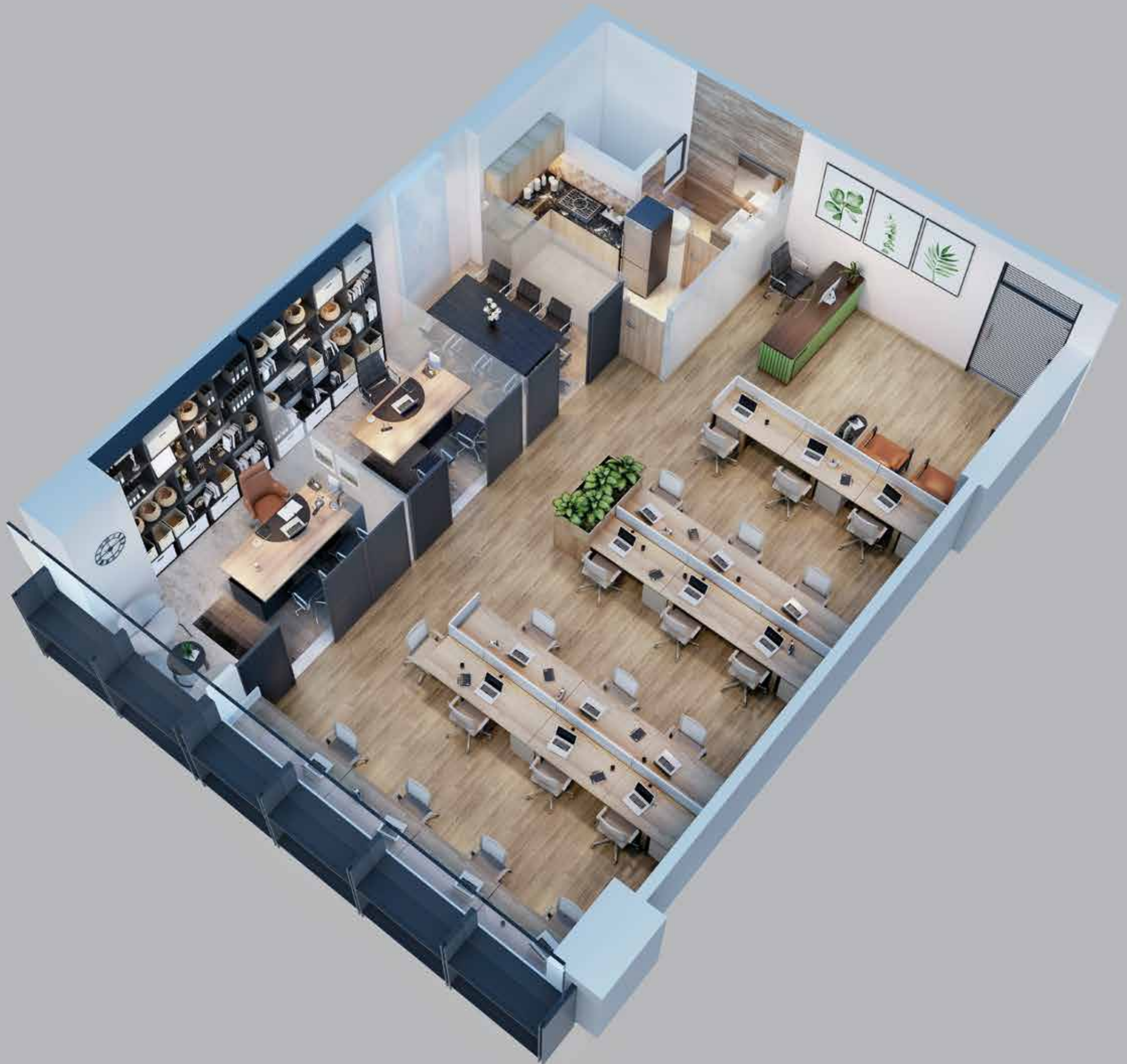
Conditions apply*

ISOMETRIC PLANS

APEX OFFICES



PINNACLE OFFICES



JODI OFFICES





Developers: Kalpataru Limited

Site address: Kalpataru Summit, LBS road, opp. Friends' Academy school, Mulund (W), Mumbai – 400080. | Head office: 101, Kalpataru Synergy, opp. Grand Hyatt, Santacruz (E), Mumbai – 400 055. Tel.: 022 3064 3065 | Email: sales@kalpataru.com | Website: www.kalpataru.com

Kalpataru Summit is registered with MahaRERA bearing reg. no. P51800033272.

Disclosure: All specifications, images, plans, designs, facilities, amenities, dimensions, elevations or any other information contained herein are in respect of the project Kalpataru Summit bearing MahaRERA reg. no. P51800033272. The same may be subject to changes/ revisions/ alterations in terms of approvals, orders, directions and/or regulations of the concerned/relevant authorities, and/or for compliance with laws/regulations in force from time to time. In view of the above, and in line with our customer policies, we may change/alter the above in consonance with approvals, orders, directions, applicable laws, regulations, etc. Unless otherwise stated, all the images, visuals, materials and information contained herein are purely creative/artistic concepts and may not be actual representations of the product and/or any amenities. Features, fixtures, fittings, goods, accessories, furniture and any other information reflected/displayed in the images are strictly for illustrative and representational purposes only and are not part of the standard final amenities & finishes. None of the above may be construed to form any basis of, or serve as an inducement or invitation for payment of any advance and/or deposit, to be made by a prospective customer, under relevant provisions of law or otherwise. Solely the amenities/ specifications, features mentioned in the agreement for sale (if any) shall be final. (Refer: <https://maharera.mahaonline.gov.in/>).

For private circulation only. This property is secured with Vistra ITCL [India] Limited. The No Objection Certificate/ Permission would be issued, at the relevant time, if required. Conditions apply.